

We test, You produce

G620

COMPACT LEAK TESTER WITH CONTINUOUS FLOW

Without a doubt the smallest high-performance continuous flow tester on the market. Specially adapted for automatic or semi-automatic test machines, the G620 has a full range of specifications at a very competitive price. The use of continuous testing may allow the localisation and repair of leaks.

Highlights

- COMPACT FORMAT
- EASY SET-UP
- OPTIONS & ACCESSORIES



Applications

Automotive, small volume parts, injection rails, filter caps, gaz industry, cookers, gas float, heat exchangers for boilers, taps...



ATEQ

G620

COMPACT LEAK TESTER WITH CONTINUOUS FLOW

Measurement ranges

FLOW MEASUREMENT	
Range	Accuracy ⁽¹⁾
100 cc/h	±(0.5% Rdg + 1% FS)
1000 cc/h	±(1% Rdg + 0.25% FS)

⁽¹⁾Accuracy: linearity + repeatability + hysteresis

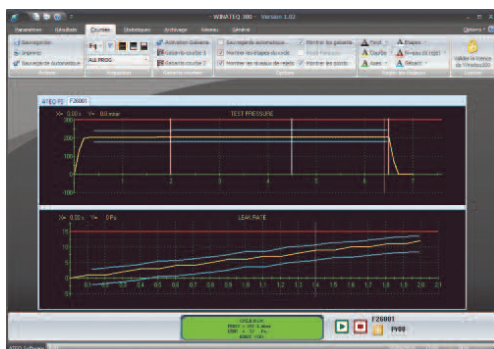
Main Features

- Continuous flow leak detection
- 128 programs
- 2 flow measurement ranges full scale : 100 or 1000 cm³.atm/h
- Measurement flow returned to standard conditions
- Manual calibration on front panel with calibrated leak
- Setting on line (via USB)
- Automatic start
- 2 languages (English + other one)
- Calculation of the test part volume
- Data storage on internal memory or USB key

Flexible Communication format

- RS232: Printer, modbus RTU
- Slave USB: PC supervision (WinAteq 300, sesame)
- Master USB: USB key to transfert (parameters, results, ...)
- Option Fieldbus: Profibus, devicenet, Ethernet/IP

Software



CDF60
leak/flow calibrator



F620 leak tester



D620 Flow tester

Technical Specifications

Physical	Weight: 7 kg / 14 lbs Dimensions: (WxHxD) 250x150x360 mm
Interface	Navigation keys 4-line vacuum fluorescent display Results indicator lights
Electrical supply	Voltage: 24 V DC / 1.6 A or 100 - 240 V AC / 50 W
Air supply	Clean and dry air required air quality standard to be applied (ISO 8573-1)
Temperature	Operating: +5°C to +45°C Storage: 0°C to +60°C

Option

- 7 inputs / 5 outputs
- 1 quick connectors for calibration checking
- 2 pneumatic outputs for control of sealing connectors
- 6 x 24 V programmable outputs for external connection
- 2 voltage Analogue Output
- Special valve (Shut off and or Bypass)

Accessories

- Simple remote control TLC60 connection I/O
- Advanced remote control TLC600 connection master USB
- ATEQ software (WINATEQ)
- Needle valve
- Master leak
- Filtration kit
- Pneumatic coupler

Please refer to ATEQ accessories list



TLC 600
Remote control



TLC 60
Remote control

